

designed, engineered and fitted...without compromise



## villa platform lift

### the perfect lift for your villa

the Villa Lift is the smallest screw/nut lifting platform in the world, able to fit into any environment. Villa Lift is a cost-effective and architectural solution for villas and homes and can be retro fitted without extra building works. A wide range of options are available to suit all environments.

### installation

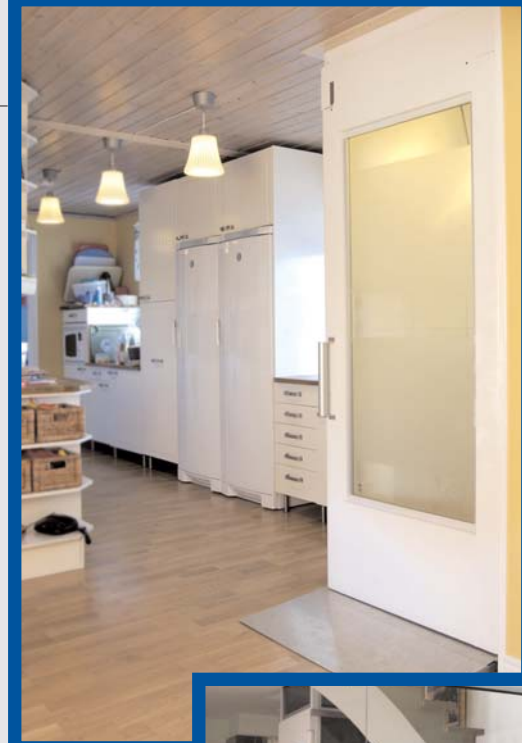
- requires very little construction work and can be installed into existing or newly built homes. All that is required is an available floor area of 910 mm x 1370 mm.
- only requires a 50 mm pit. If delivered with a ramp, the pit is not required.
- the Villa Lift does not have an external machine room. All the necessary machinery and the electrical system are housed inside the shaft enclosure.

### safety first

all platform edges are guarded by sensors and, in case of power failure, the lift can be lowered to the closest floor by the battery backup system.

### options

- glass shaft panels available in three heights (736mm, 1472mm and 2208mm)
- different types of flooring (vinyl or rubber)
- door placement available on 3 sides
- various internal finishes



### technical data

Lifting capacity	2 people / 225kgs
Lifting height	max 12m
Top height	2.3m
Number of stops	max. 5 stops
Control system	hold-to-run or automatic
Drive system	screw & nut
Power	single phase 240v ac
Platform dims	805mm x 1080mm
Required floor area	880mm x 1340mm
Speed	0.15 m/s

designed, engineered and fitted...without compromise



## villa platform lift

